

# Building a Semantic Layer with MCP and LangChain for Agentic AI

STARDOG



# Presenters



**Mike Grove**

Co-Founder & SVP  
of Engineering



**Pranav Khurana**

Senior Software Engineer -  
AI & Cloud

# We make AI intelligent.

We provide humans and agents trusted, contextual data to make critical decisions—in the boardroom or on the battlefield.

STARDOG

# 3 Keys to success with Agentic AI

## Access

### **MCP (Model Context Protocol)**

Open standard for connecting large language models, providing universal access to software systems as “tools”

## Orchestration

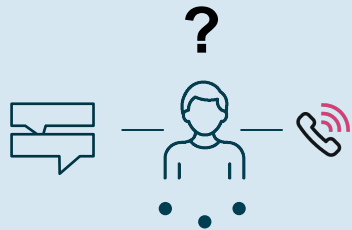
### **Langchain**

Open-source framework for building applications powered by LLMs (large language models), allowing integration and orchestration of agentic systems

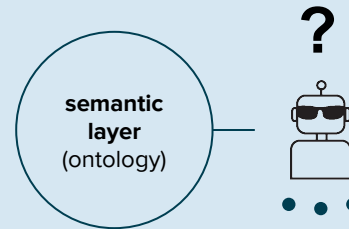
## Understanding

Where do agents get this?

# Humans bring General Intelligence to data problems.



# Agents don't.



Agents are **more likely** to use confident language like “definitely” and “certainly” when ***wrong***

**Gartner**

Emerging Tech: Agentic AI  
Needs Context-Aware Data  
Management

“A unified semantic layer is **required** to **enable AI** agents to achieve contextual **understanding** and advanced reasoning.”

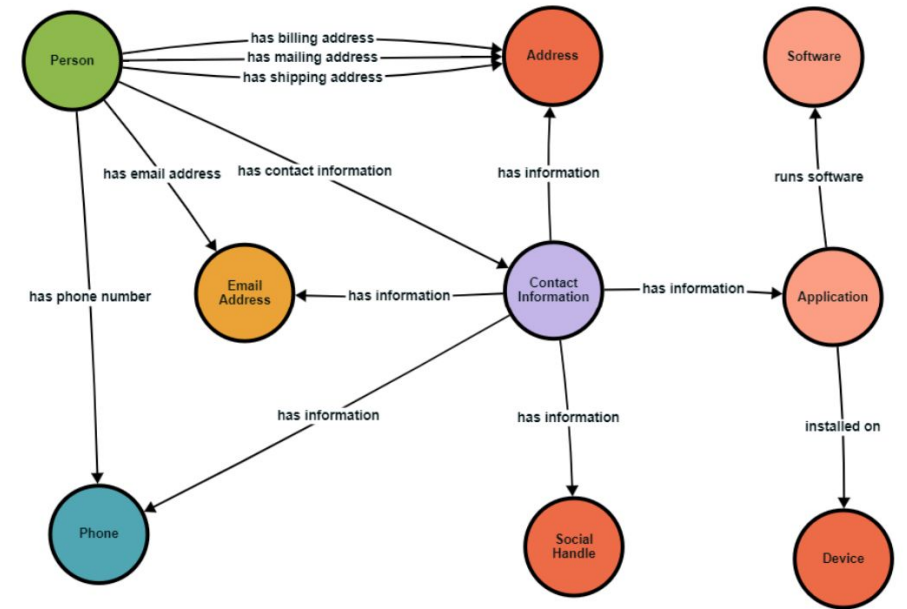
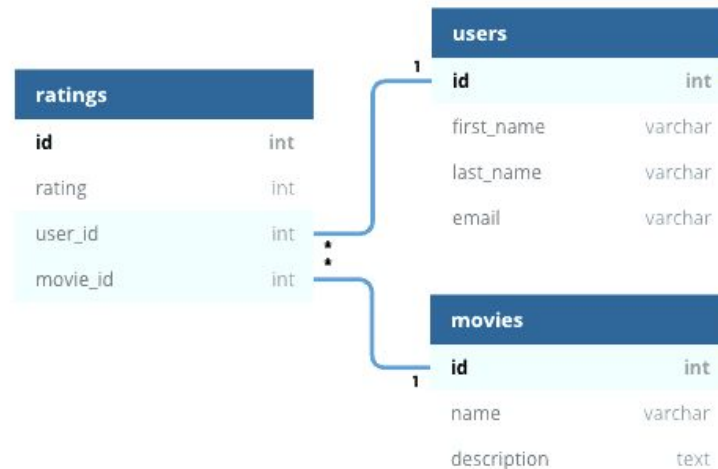
# Your database is not a Semantic Layer, and labels aren't context.

## RAG

Retrieval Augmented Generation (RAG) enhances an LLM's responses by retrieving relevant information from an external knowledge source before generating an answer.

## GraphRAG

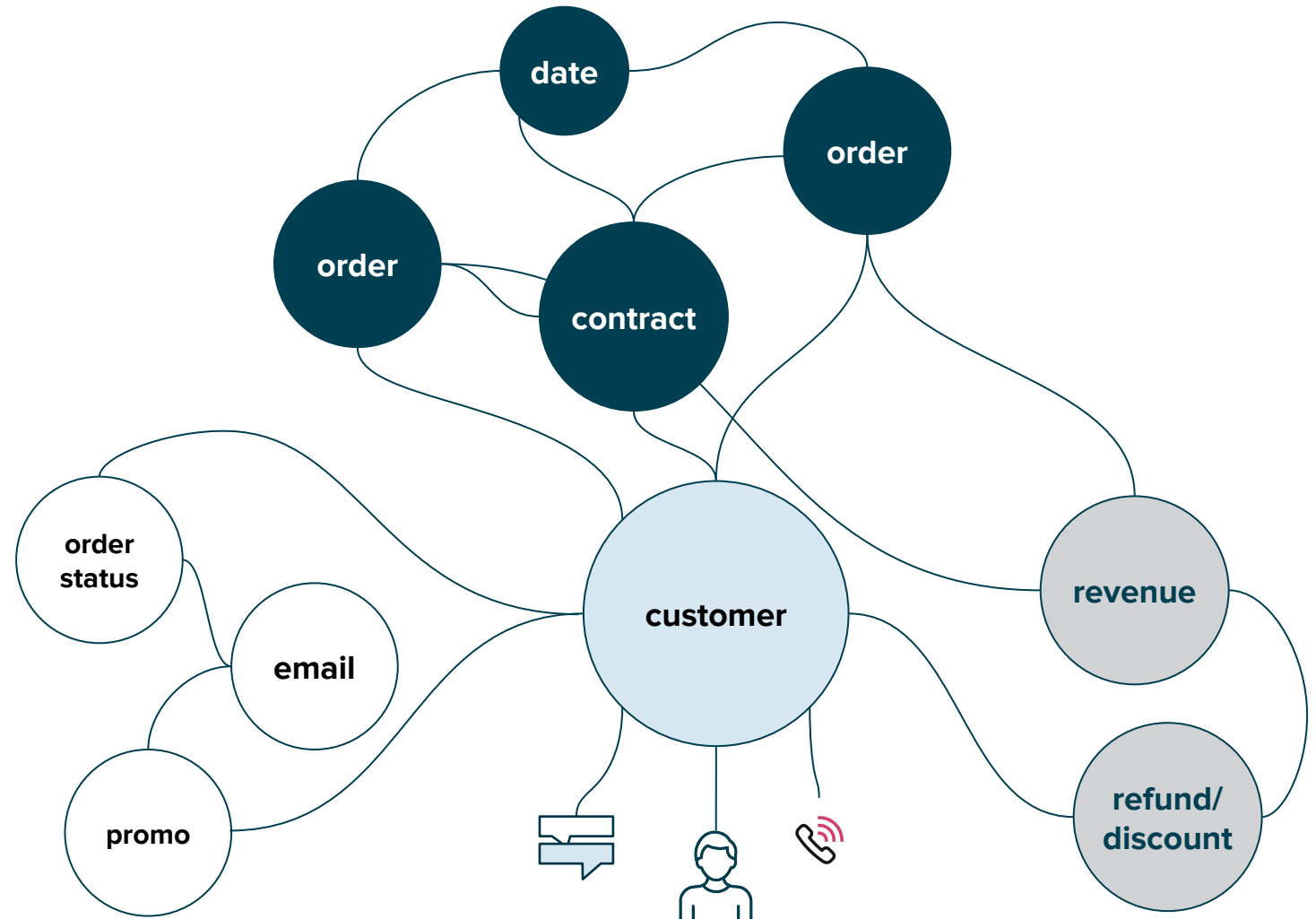
An advanced version of RAG, GraphRAG leverages the relationships between data points (nodes and edges).



# Ontologies define what matters.

## What is a customer?

- places an order
- signs up for email
- signs a contract
- purchased within the last year
- net positive revenue





# Stardog Semantic AI Platform

## Semantic Enrichment

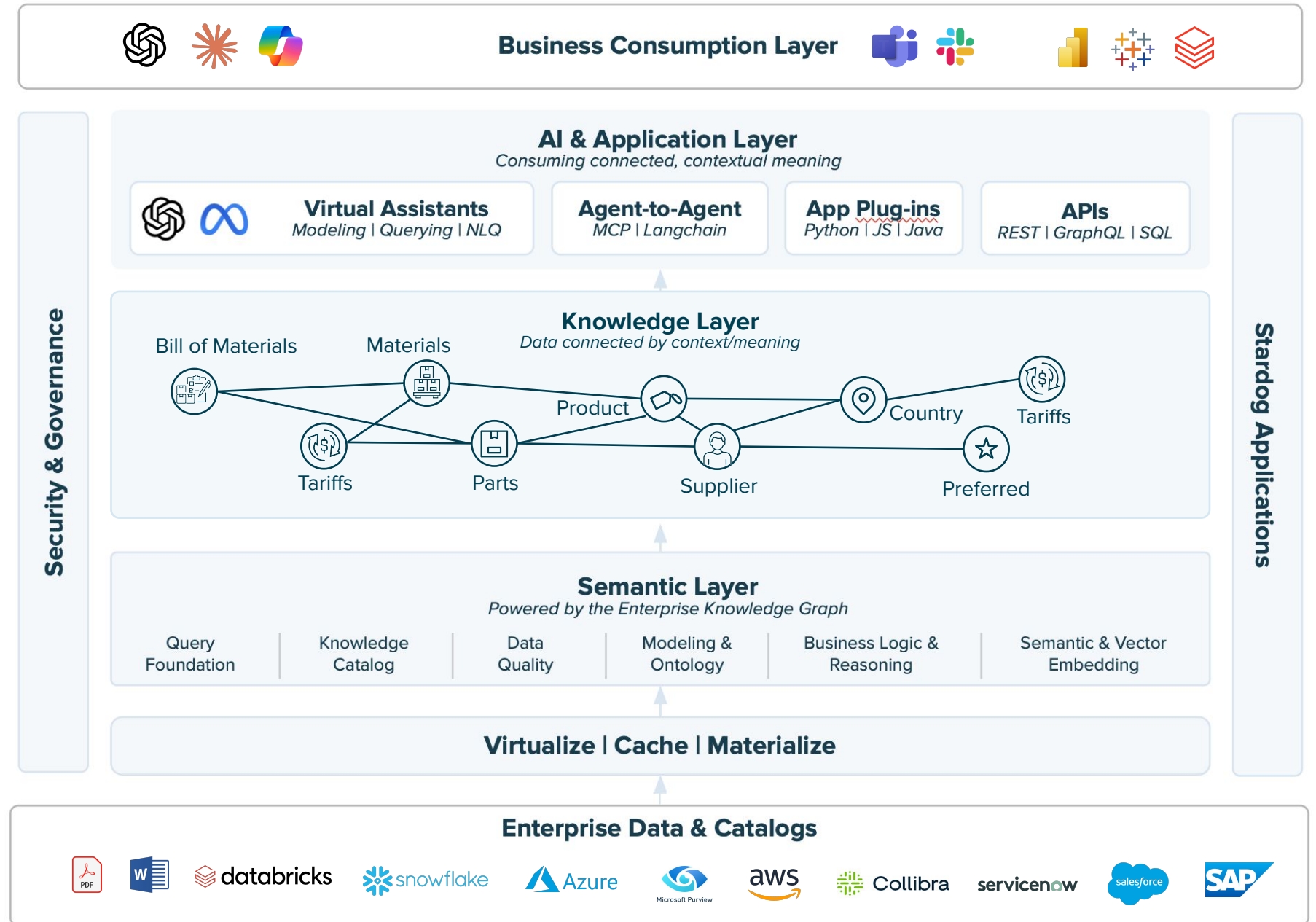
Generate more connections and enhance the network effect of your data. Capture, store, share, and enrich metadata using ML and reasoning

## Ontology Modeling

The most flexible enterprise abstraction layer for data. Define the data model in relation to the meaning, not the structure, of the data.

## Data Federation

Stop manipulating data and reduce the time, resources, and costs of deploying data for advanced analytics





# Demo

**Part 1:**  
Zero to KG in 60s

**Part 2:**  
Stardog integration with MCP and  
Langchain deep-dive

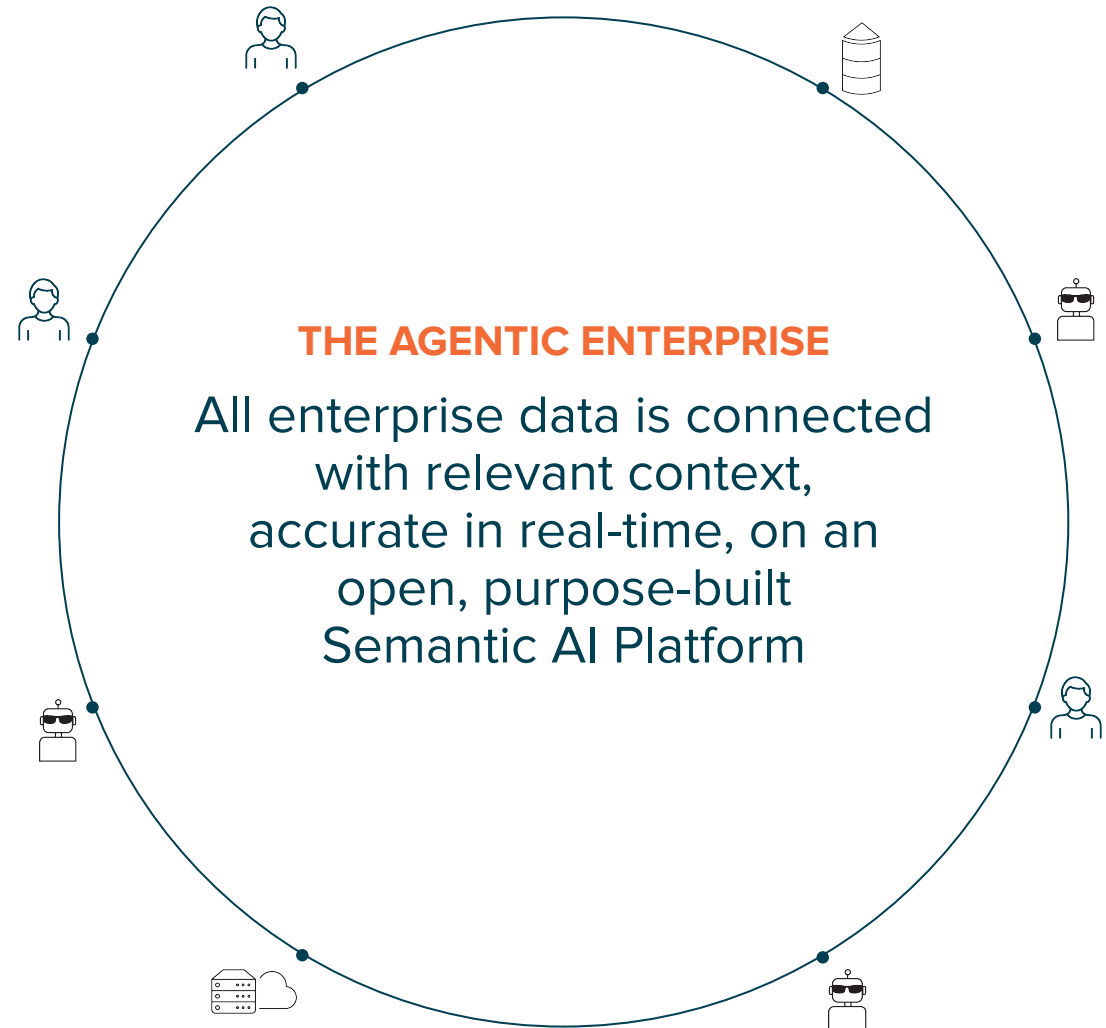
STARDOG

# Stardog gives Agents understanding.

**Ontologies define what matters to your business.**

**Data is integrated from anywhere, all at once.**

**Agents (like humans) can reason across systems.**





# Experience the power of Stardog with your own data!

Schedule your enterprise team for a Test Drive at <http://info.stardog.com/test-drive>

How can I help?



## ADDITIONAL RESOURCES

MCP public repo: <https://github.com/stardog-union/stardog-cloud-mcp>

Stardog LangChain integration: <https://pypi.org/project/langchain-stardog/>

Langchain demo app: <https://github.com/pranav-k/mcp-lc-demo>

# Questions?

STARDOG